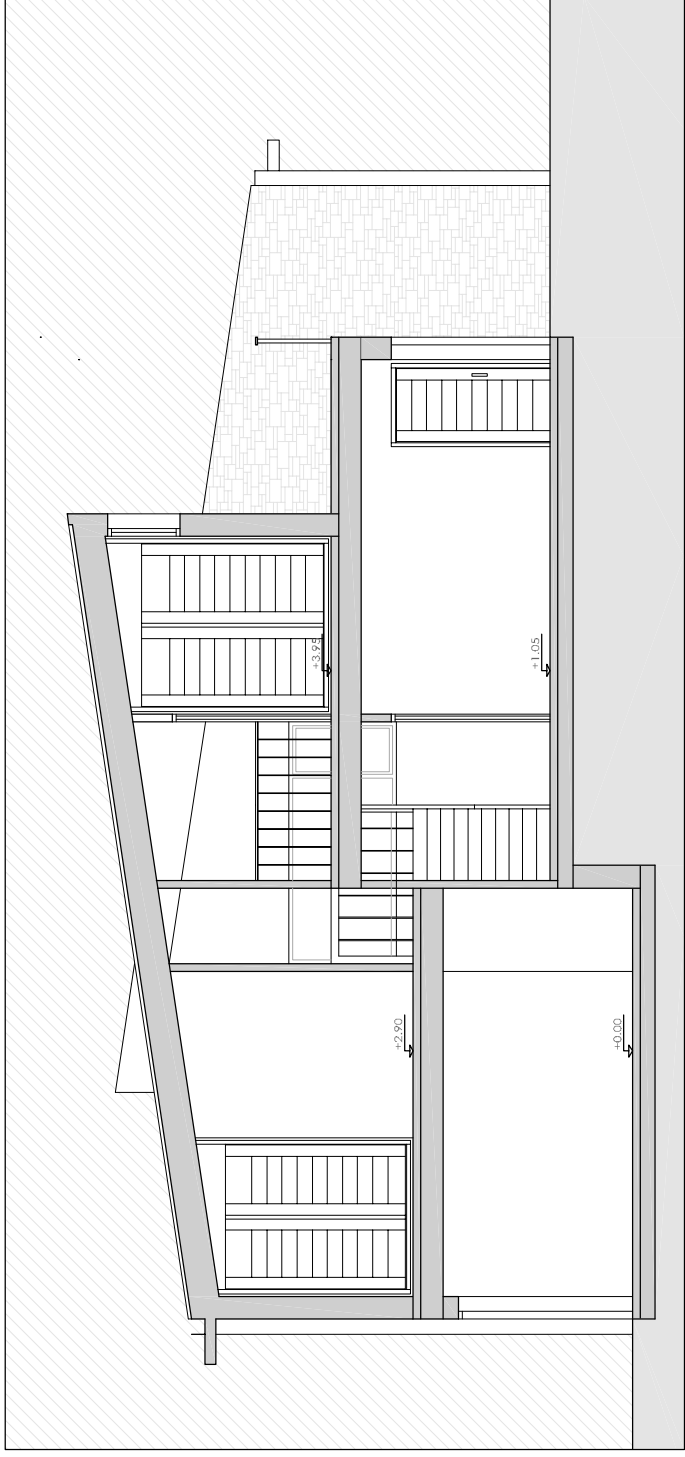
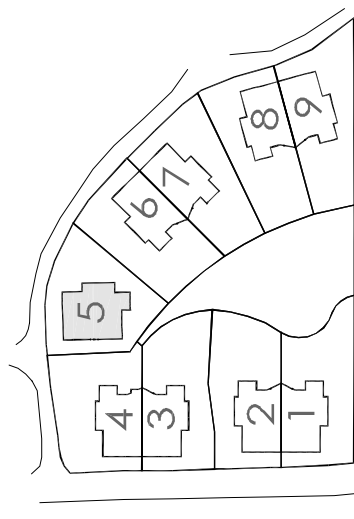
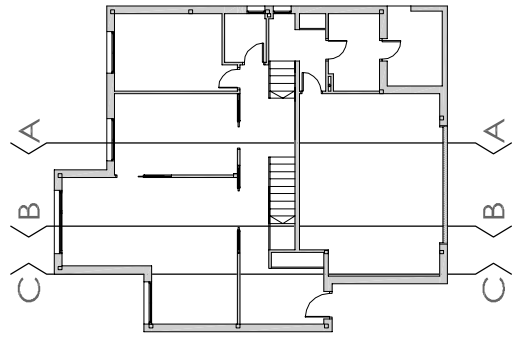


Conjunto Residencial

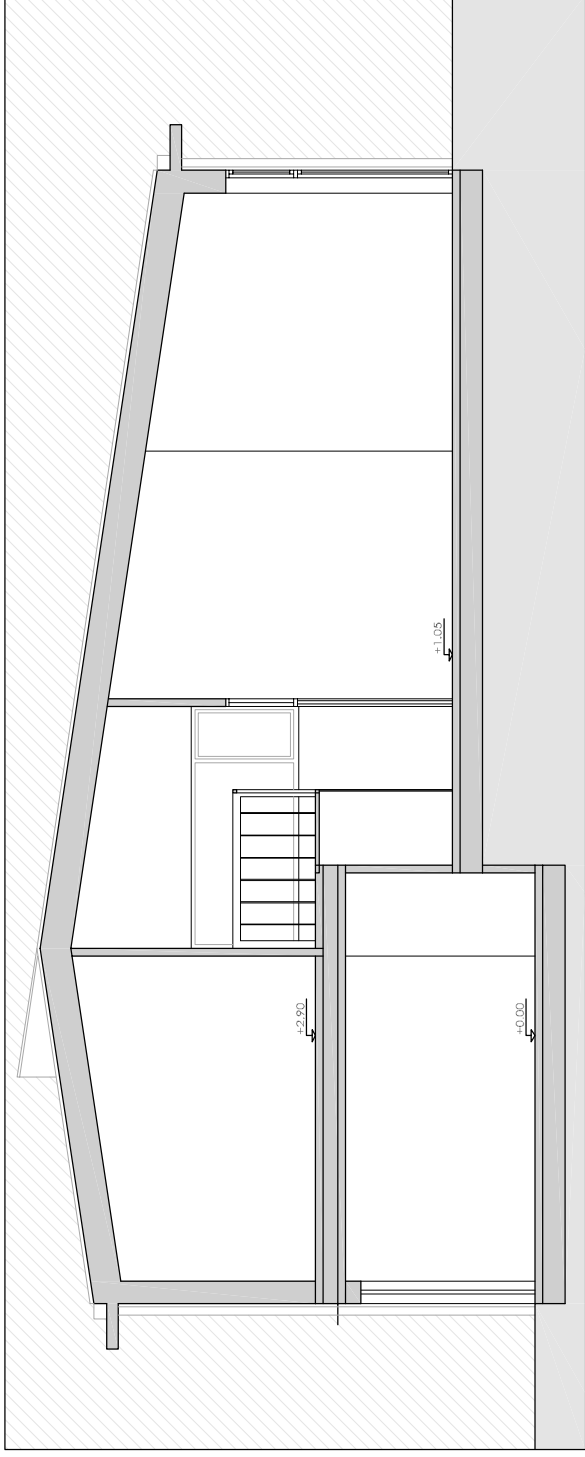
Cobas, Ames

Vivienda Unifamiliar Aislada

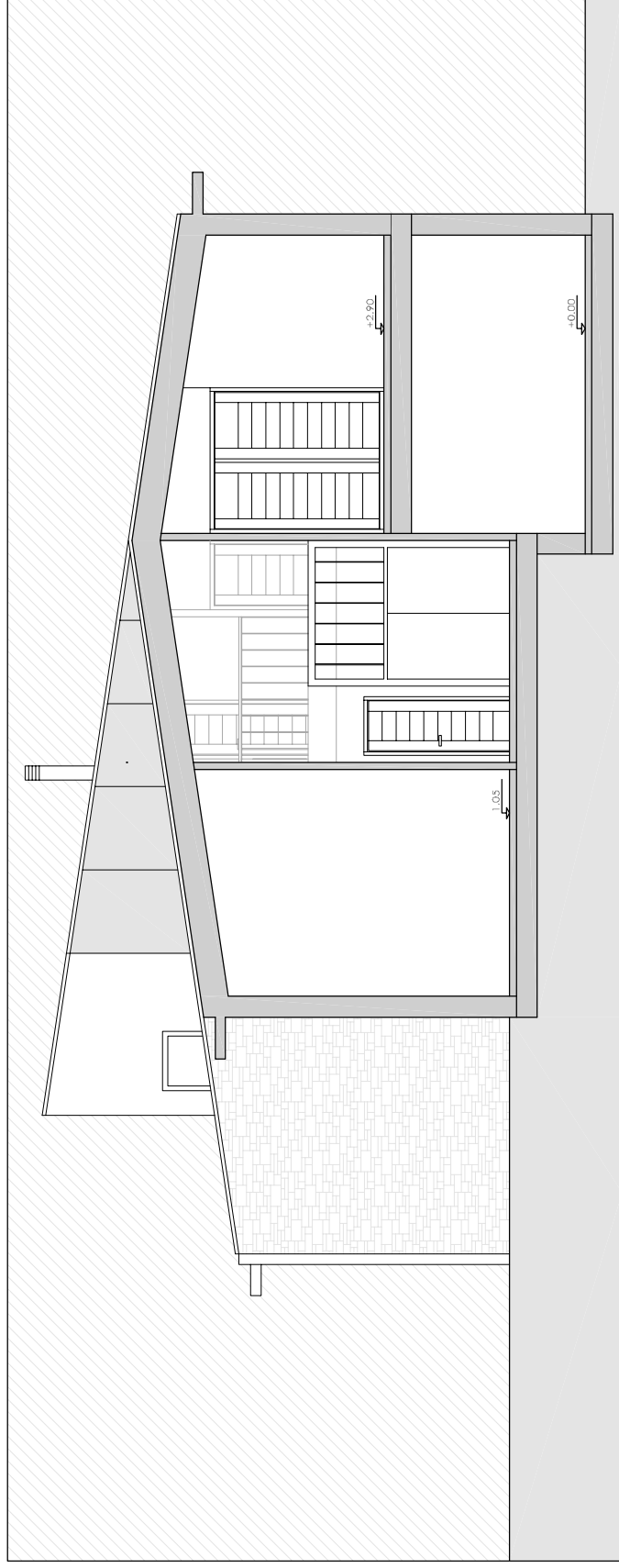
1	sup. útil:	77.55 m ²
	sup. construida:	94.07 m ²
0	sup. útil:	130.00 m ²
	sup. construida:	152.02 m ²
T	sup. útil:	207.55 m ²
	sup. construida:	246.09 m ²



sección AA



sección BB



sección CC